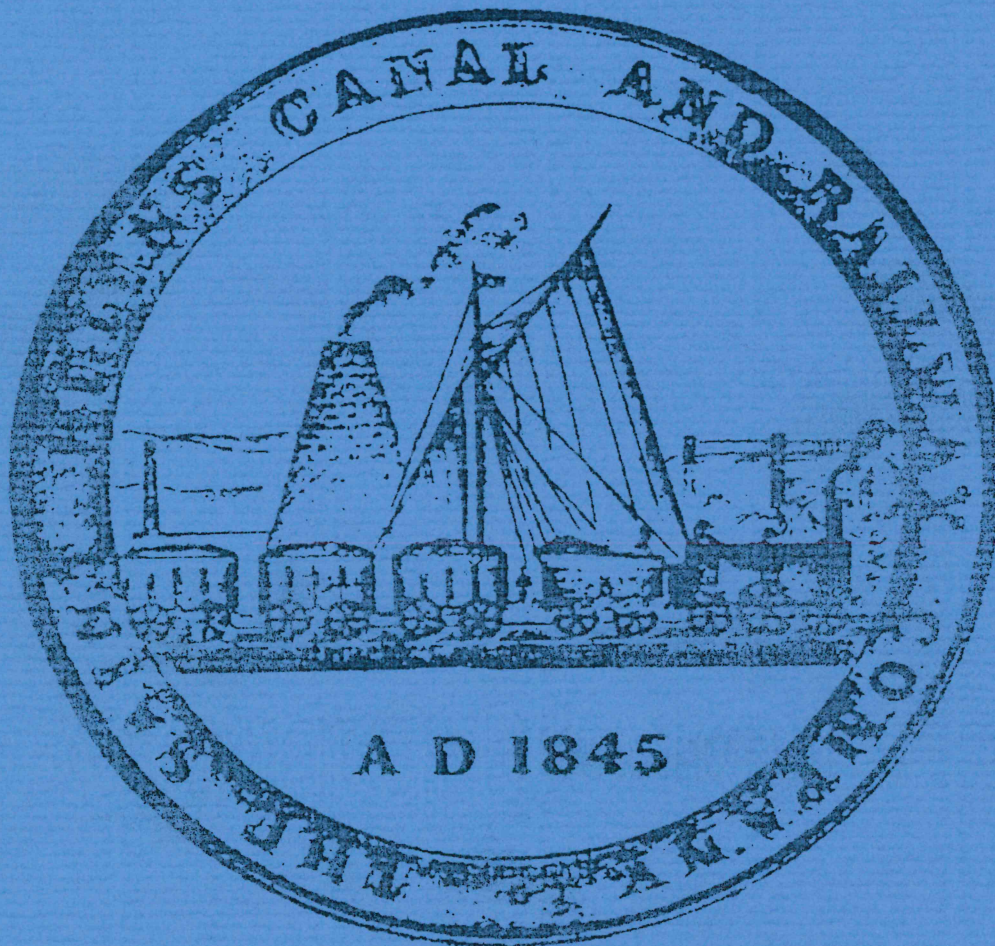


# ST HELENS CANAL RESTORATION FEASIBILITY STUDY



**THIS DOCUMENT CONTAINS:**

**VOLUME 1** Technical Report

**VOLUME 5** Technical Appendix  
Restoration Proposals Drawings



Certificate No. FS 20794



ST HELENS CANAL  
FEASIBILITY STUDY  
VOLUME 1  
TECHNICAL REPORT

Prepared by: *J M Hewitt*  
.....  
J M Hewitt IEng FCIWEM

*J M Hewitt*  
.....  
PP R P Moss BSc(Hons) DipTP MRTPI

Checked by: *J N Cooper*  
.....  
J N Cooper BEng(Hons) MSc CEng MICE MCIWEM

Reviewed by: *J E Saunders*  
.....  
J E Saunders CEng FICE

Authorised by: *J D Carr*  
.....  
J D Carr BSc(Hons) CEng MICE MCIWEM

WS Atkins Consultants Limited  
WS Atkins House  
Birchwood Boulevard  
Birchwood  
Warrington  
Cheshire WA3 7WA

Tel: 01925 828987  
Fax: 01925 828153

Reference: AY2311.850/JMH/jp/120.7521  
Issue No: 05/Date: August 1996

**CONTENTS**  
**VOLUME 1 : TECHNICAL REPORT**

	<b>Page</b>
<b>1.0 INTRODUCTION</b>	<b>1</b>
1.1 Form of Report	1
1.2 Study Objectives	3
1.3 Approach to the Study	3
1.4 Consultations	4
<b>2.0 BACKGROUND</b>	<b>5</b>
2.1 Canal History	5
2.2 Engineering and Heritage	6
2.3 Present Condition	8
2.4 Key Issues Affecting Restoration	14
<b>3.0 HYDROLOGY</b>	<b>16</b>
3.1 History of Canal Water Supplies	16
3.2 Existing Situation	19
Pilkington's Canal Feeder	
Rainford Brook	
Carr Mill Dam/Black Brook	
Callands Brook	
Fiddlers Ferry Power Station	
Stormwater Systems and Land Drainage	
3.3 Canal Water Resource Requirements	22
Lockage Losses	
Leakage	
Seepage	
Evapotranspiration	
Total Canal Water Demand	

**CONTENTS**  
**VOLUME 1 : TECHNICAL REPORT**

	Page
3.4 Available Supply	26
Methodology	
Surface Water Sources	
Water Quality	
Use of Groundwater Supplies	
Summary of Canal Water Balance	
Recommended Supply Options for Full Canal Restoration	
3.5 Interim Supply Arrangement	41
Existing Situation	
3.6 Flood Defence Implications	43
Rainford Brook	
Havannah Flashes	
Gemini Business Park	
Bewsey Lock	
Sankey Bridges	
Conclusions	
4.0 CONSTRAINTS ON RESTORATION	47
4.1 Changed Alignment	47
Park Road to Old Double Lock	
Hulme Lock to Bewsey Lock	
4.2 Contaminated Silt and Fill	51
4.3 Major Structural Obstacles	54
M62 Motorway Crossing	
Sankey Way Culvert	
Liverpool Road Bridge	
4.4 Blackbrook Branch	57
5.0 RESTORATION PROPOSALS	59
5.1 Approach and Criteria	59
5.2 Deviation from Original Alignment	60
5.3 Dimensional Standards	61
5.4 Construction Details	63

**CONTENTS**  
**VOLUME 1 : TECHNICAL REPORT**

	Page
5.5 Environmental Enhancement of Canal Track	67
5.6 Proposed Restoration Works	69
5.7 Section A - Safeway to Corporation Street	69
5.8 Section B - Corporation Street to Islands Brow	71
5.9 Section C - Islands Brow to Blackbrook	73
5.10 Section D - Old Double Lock to Engine Lock	75
5.11 Section E - Engine Lock to Penkford Bridge	76
5.12 Section F - Penkford Bridge to Bradley Lock	76
5.13 Section G - Bradley Lock to Newton Brook	77
5.14 Section H - Newton Brook to Winwick and Section J (Part) - Winwick to Dallam (New Hulme Lock)	78
5.15 Section J (Part) - Dallam (New Hulme Lock) to Bewsey Lock	80
5.16 Sections K to N - Bewsey to Spike Island	81
5.17 Section K - Bewsey to Liverpool Road	82
5.18 Section L - Liverpool Road to Fiddlers Ferry	83
5.19 Section M - Fiddlers Ferry to Carterhouse Swing Bridge	84
5.20 Section N - Carterhouse Swing Bridge to Spike Island	85
6.0 RESTORATION COSTS	86
6.1 Estimated Costs	86
6.2 Commentary on Costs	89
7.0 POTENTIAL BENEFITS FROM RESTORATION	94
7.1 Introduction	94
7.2 Construction Phase	95
Local Spending	
Direct Employment	
Indirect Employment	

**CONTENTS**  
**VOLUME 1 : TECHNICAL REPORT**

	Page
<b>7.3 Formal Uses of the Canal</b>	<b>98</b>
Weekly Boat Hire	
Short Break Boat Hire	
Day Boat Hire	
Trip Boat/Restaurant Boat/Waterbus	
Private Boats	
Angling	
Canoeing	
<b>7.4 Informal Use of the Canal</b>	<b>107</b>
Walking, Cycling and Horse Riding	
Gongoozlers	
Other Informal Uses	
<b>7.5 Canal Related Development</b>	<b>108</b>
<b>7.6 Canal Operation and Maintenance</b>	<b>109</b>
<b>7.7 Post Restoration Impacts on Local Economy</b>	<b>109</b>
Spending	
Employment	
<b>7.8 Conclusions</b>	<b>112</b>
Summary of Restoration Benefits	
Cost-Benefit Analysis	
<b>8.0 POTENTIAL SOURCES OF FUNDING</b>	<b>117</b>
<b>8.1 Introduction</b>	<b>117</b>
<b>8.2 European Union Funds</b>	<b>117</b>
European Structural Funds	
European Community Initiatives	
<b>8.3 Central Government Funds</b>	<b>119</b>
Single Regeneration Budget	
<b>8.4 Lottery Funds</b>	<b>119</b>
The Millennium Commission	
National Heritage Memorial Fund	
Sports Council	

**CONTENTS**  
**VOLUME 1 : TECHNICAL REPORT**

	Page
8.5 Government Agencies	123
Countryside Commission	
English Heritage	
English Partnerships	
8.6 Local Authorities	125
8.7 Private Sector	125
8.8 Conclusions	126
9.0 RESTORATION STRATEGY	127
9.1 Restoration in Sections	127
9.2 Central Section	128
9.3 Mersey Section	129
9.4 Warrington Section	129
9.5 St Helens Section	130
9.6 Major Obstacles	130
9.7 Conclusions	131
10.0 POST RESTORATION EXPENDITURE AND REVENUE	134
10.1 Canal Authority	134
10.2 Expenditure	134
Water Supply	
Maintenance	
Operation	
Annual Expenditure	
10.3 Revenue	137
Boat Licences	
Mooring Fees	
Angling Licences	
Income from Property	
Revenue from Existing Marinas	
Annual Income	
10.4 Balance of Expenditure and Revenue	139

**CONTENTS**  
**VOLUME 1 : TECHNICAL REPORT**

	<b>Page</b>
<b>11.0 CONCLUSIONS</b>	<b>144</b>
<b>12.0 RECOMMENDATIONS</b>	<b>144</b>
<b>Appendix 1 List of Consultees</b>	

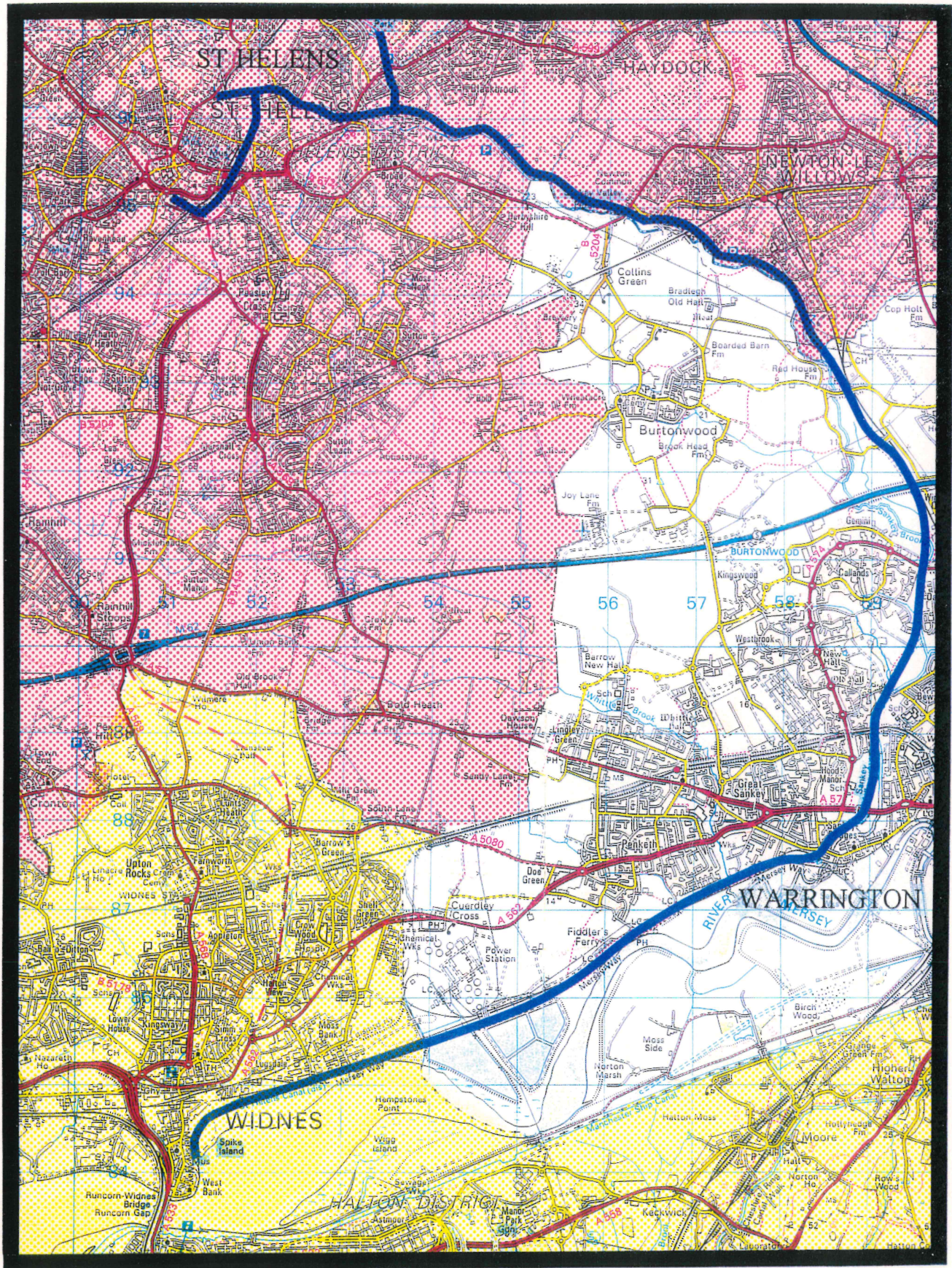
Followed by:-

**Volume 5 Technical Appendix - Restoration Proposals Drawings**



## LIST OF FIGURES

- Figure 1.1** Location Plan
- Figure 2.1** Key Plan - Canal Sections
- Figure 2.2** Schematic of Canal's Current Status
- Figure 3.1** Location of Water Resources in Upper Section of Canal
- Figure 3.2** Existing Supply Regime in St Helens
- Figure 3.3a** Supply Required Along Canal
- Figure 3.3b** Components of Pound Demand
- Figure 3.4** Proposed Supply Regime in St Helens
- Figure 3.5** Revised Hydraulic Regime
- Figure 9.1** Restoration Strategy



ST HELENS MBC



WARRINGTON BC



HALTON BC

**ST HELENS CANAL**  
Location Plan

FIGURE 11